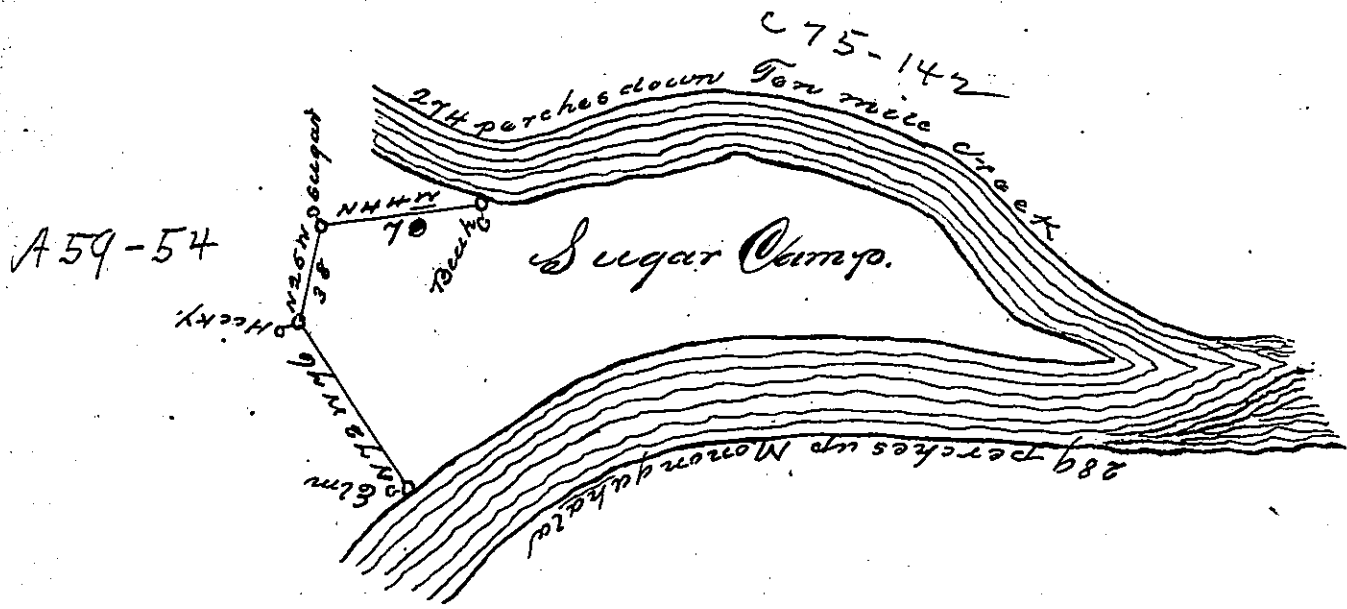


Courses <sup>1/2</sup> down Ten mile

N. 43. E. 100  
 N. 74. E. 78  
 S. 48. E. 50.  
 N. 75. E. 46.

Courses & Dist. up Monongahala River

S. 60. W. 82. perches  
 S. 52. W. 64.  
 S. 41. W. 56.  
 S. 21. W. 84.



In pursuance of an Order of Survey N<sup>o</sup>. 3319 the above is a Draught of a Tract of Land situate on a point formed by the Monongahala River and Ten Mile Creek Washington County. Called Sugar Camp, containing one hundred and thirty one acres and thirty two perches with the usual allowance of six p. Cent for Roads and Highways. Survey April of the 1784 for George Teagarden by App<sup>n</sup> of John Hoop date 3<sup>d</sup> June 1769.

David Redick D. J.

To John Lukens Esqr  
 S. G.

NOTE. The Order is in the name of John Hoop

IN TESTIMONY that the above is a copy of the original remaining on file in the Department of Internal Affairs of Pennsylvania, made conformably to an Act of Assembly approved the 16th day of February, 1833, I have hereunto set my Hand and caused the Seal of said Department to be affixed at Harrisburg, this second day of January, 1900

James W. Latta  
 Secretary of Internal Affairs.